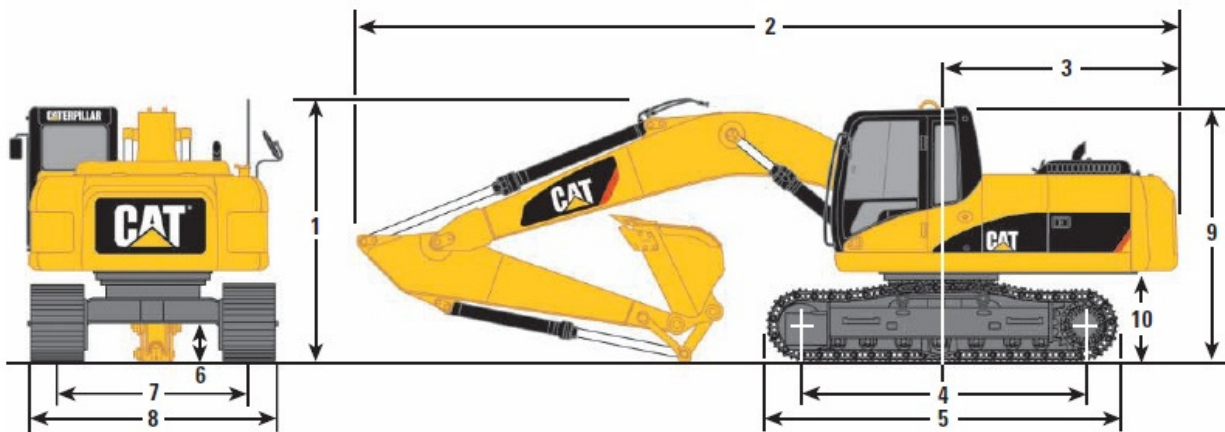




Address
 46 Prince St
 Danvers, MA 01923

Phone
 978-762-RENT (7368)

CAT 320 Dimension Sheet



Boom Options	Reach 5.68 (18'7")	Reach 5.68 (18'7")	Reach 5.68 (18'7")	Mass 5.2 m (17'1")	Super Long Reach 8.85 m (29'1")
Stick Options	R3.9B1 m (12'8")	R2.9B1 m (9'7") Std/SA	R2.5B1 m (8'2") Std/SA	M2.4CB2 m (7'10")	6.28 m (20'7")
1 Shipping Height	*3740 mm (12'3")	3030 mm (9'11")	3050 mm (10'0")	3280 mm (10'9")	3190 mm (10'6")
2 Shipping Length	9440 mm (31'0")	9460 mm (31'0")	9460 mm (31'0")	9050 mm (29'8")	12 680 mm (41'7")
3 Tail Swing Radius	2750 mm (9'0")	2750 mm (9'0")	2750 mm (9'0")	2750 mm (9'0")	2750 mm (9'0")
4 Length to Center of Rollers					
Standard	3265 mm (10'9")	3265 mm (10'9")	3265 mm (10'9")	3265 mm (10'9")	n/a
Long	3650 mm (12'0")	3650 mm (12'0")	3650 mm (12'0")	3650 mm (12'0")	3650 mm (12'0")
5 Track Length					
Standard	4075 mm (13'4")	4075 mm (13'4")	4075 mm (13'4")	4075 mm (13'4")	n/a
Long	4455 mm (14'7")	4455 mm (14'7")	4455 mm (14'7")	4455 mm (14'7")	4455 mm (14'7")
6 Ground Clearance	450 mm (1'6")	450 mm (1'6")	450 mm (1'6")	450 mm (1'6")	450 mm (1'6")
7 Track Gauge					
Standard	2200 mm (7'3")	2200 mm (7'3")	2200 mm (7'3")	2200 mm (7'3")	n/a
Long	2380 mm (7'10")	2380 mm (7'10")	2380 mm (7'10")	2380 mm (7'10")	2380 mm (7'10")
8 Transport Width	800 mm Shoes	700 mm Shoes	600 mm Shoes		800 mm Shoes
Standard	3000 mm (9'10")	2900 mm (9'6")	2800 mm (9'2")	2800 mm (9'2")	2800 mm (9'2")
Long	3180 mm (10'5")	3080 mm (10'1")	2980 mm (9'9")	2980 mm (9'9")	2980 mm (9'9")
9 Cab Height	2950 mm (9'8")	2950 mm (9'8")	2950 mm (9'8")	2950 mm (9'8")	2950 mm (9'8")
10 Counterweight Clearance	1020 mm (3'4")	1020 mm (3'4")	1020 mm (3'4")	1020 mm (3'4")	1020 mm (3'4")