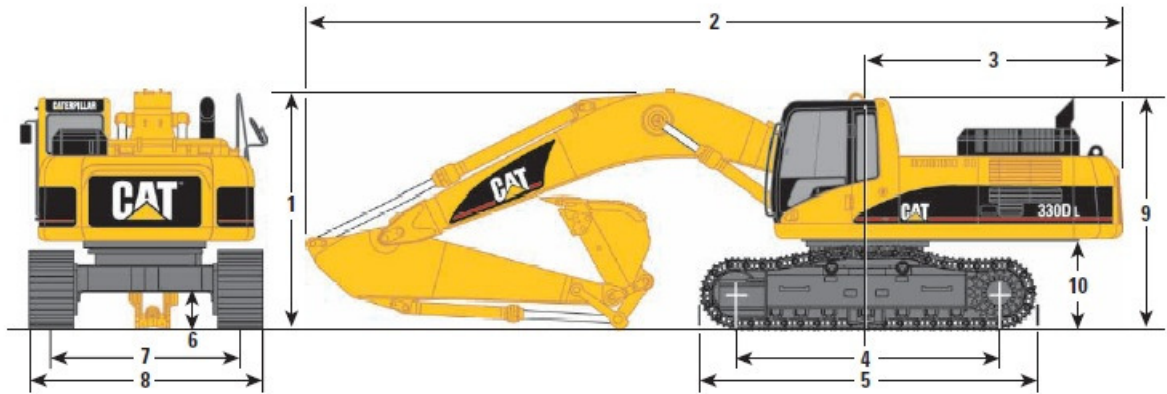




Address
 46 Prince St
 Danvers, MA 01923

Phone
 978-762-RENT (7368)

CAT 330 Dimension Sheet



Boom Options	Reach Boom 6.5 m (21'4")		Mass Boom 6.18 m (20'3")
Stick Options	R3.9DB (12'10")	R3.2DB (10'6")	M2.55TB1 (8'4")
1 Shipping height*	3630 mm (11'11")	3350 mm (11'0")	3580 mm (11'9")
2 Shipping length	11 200 mm (36'9")	11 150 mm (36'7")	10 910 mm (35'10")
3 Tail swing radius	3500 mm (11'6")	3500 mm (11'6")	3500 mm (11'6")
4 Length to center of rollers	4040 mm (13'3")	4040 mm (13'3")	4040 mm (13'3")
5 Track length	5020 mm (16'6")	5020 mm (16'6")	5020 mm (16'6")
6 Ground clearance**	450 mm (1'6")	450 mm (1'6")	450 mm (1'6")
7 Track gauge	2590 mm (8'6")	2590 mm (8'6")	2590 mm (8'6")
8 Transport width			
800 mm (32") shoes (standard)	3390 mm (11'1")	3390 mm (11'1")	3390 mm (11'1")
700 mm (28") shoes (optional)	3290 mm (10'10")	3290 mm (10'10")	3290 mm (10'10")
850 mm (34") shoes (optional)	3440 mm (11'3")	3440 mm (11'3")	3440 mm (11'3")
9 Cab height	3140 mm (10'4")	3140 mm (10'4")	3140 mm (10'4")
10 Counterweight clearance*	1220 mm (4'0")	1220 mm (4'0")	1220 mm (4'0")

* Includes 30 mm (1 1/8 in) lug height. R3.9 increase to 3700 mm (12'2") with medium pressure and/or drain auxiliary lines.

** Without 30 mm (1 1/8 in) shoe lug height.